

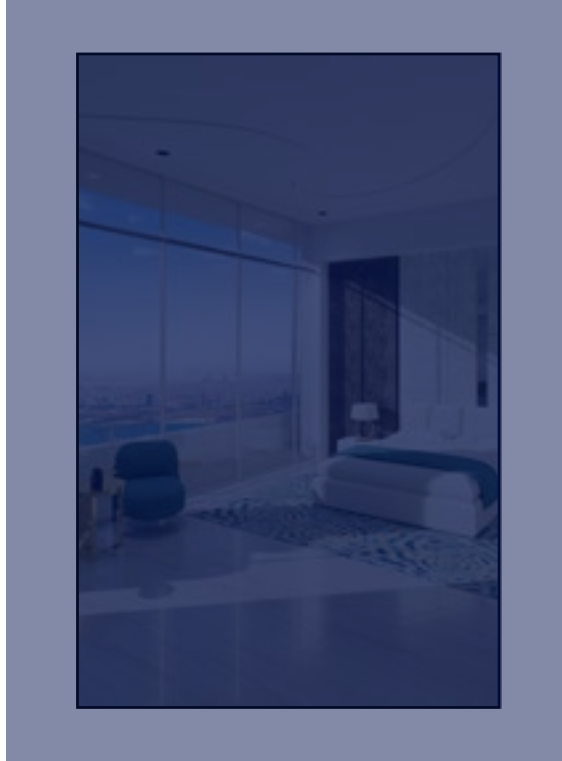
JSD *JSD* **DESIGNS**

Jessica Stephens' Designs

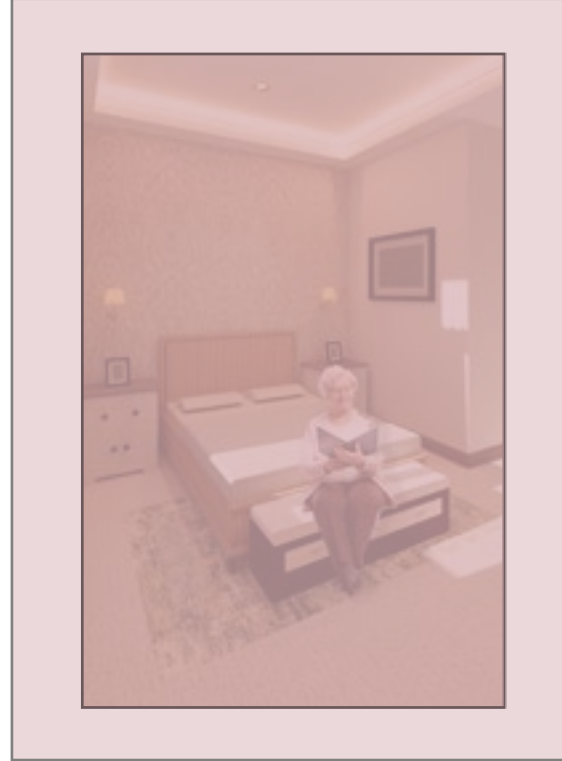
Interior Design Portfolio

TABLE OF CONTENTS

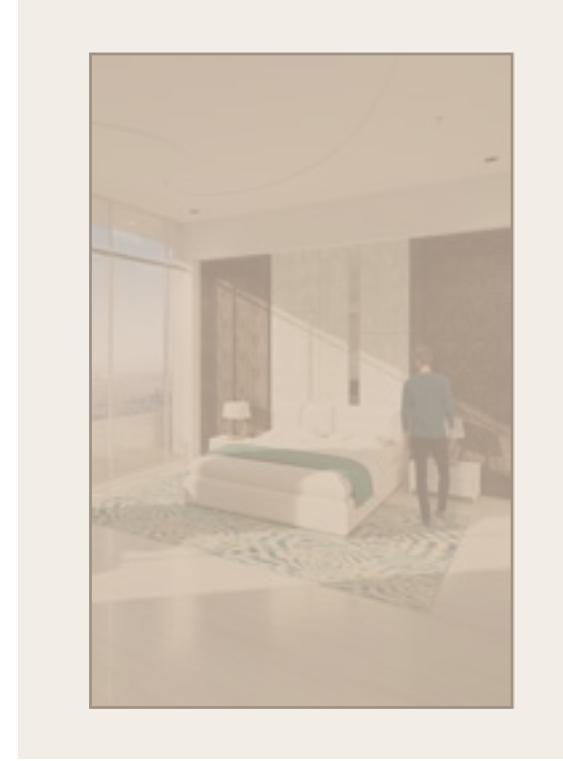
PHILOSOPHY STATEMENT



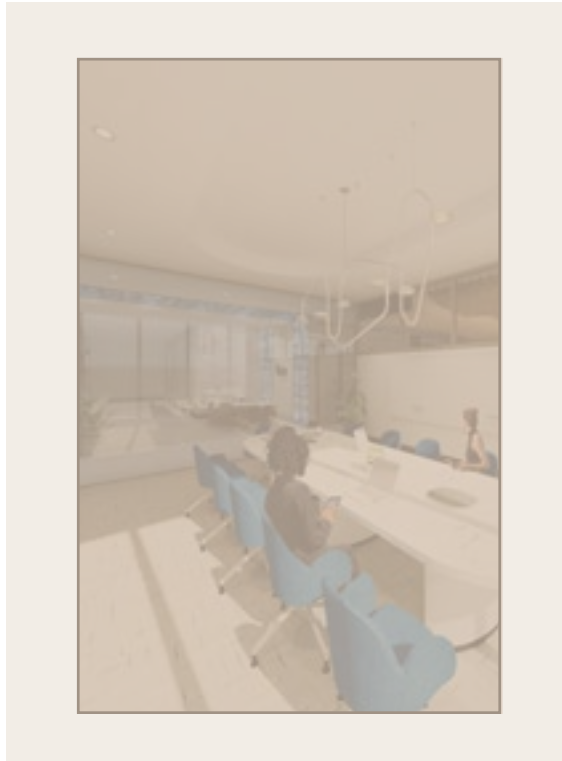
Philosophy Statement



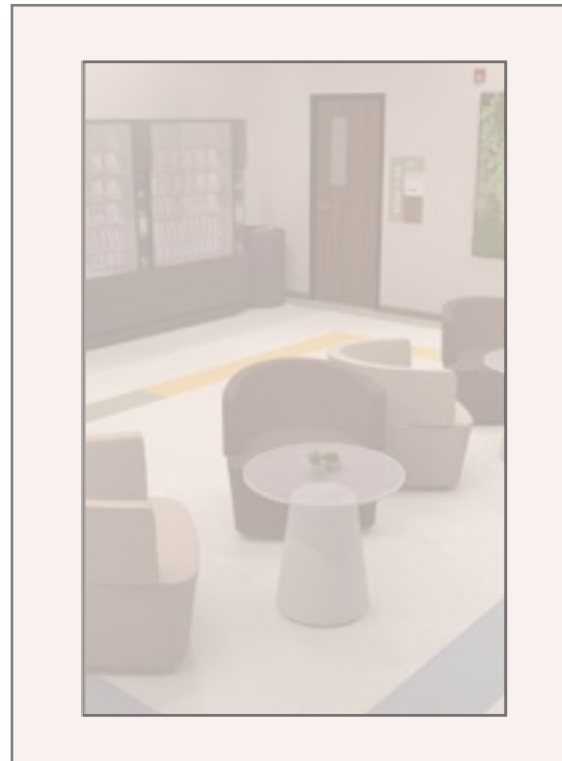
Comfort Care



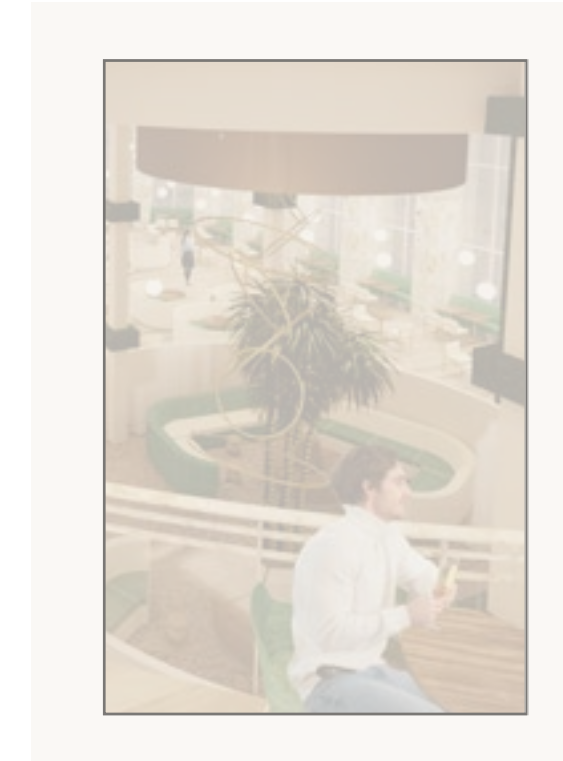
W Hotel



iNext



Powell Hall



JD's Contemporary Eatery



I believe interior design is meant to create **beautiful, intentional,** and **impactful** designs for people utilizing them. Creating spaces that reach people of all life avenues to coincide with our diverse world is essential to our role as designers. I am dedicated to designing **impactful** interiors that people can experience and enjoy to create lasting memories. With **well-being, sustainability, purpose,** and **safety** as the defining considerations of every project, my designs are intended to keep the user at the **center** during every step of the design process.

COMFORT CARE

Project Data:

Project Type: Senior Living- Memory Care

Location: Houston, Texas

Completed: Fall 2023

Software Used:



Project Information:

The goal is to design a memory care residence that emulates comfort and a home-like environment for residents. Memory care is a specific sector in senior living with particular requirements for the design to benefit the users positively. Bringing in elements of the local culture that the project is based on will also help to replicate the comfortable environment that this project is trying to achieve.

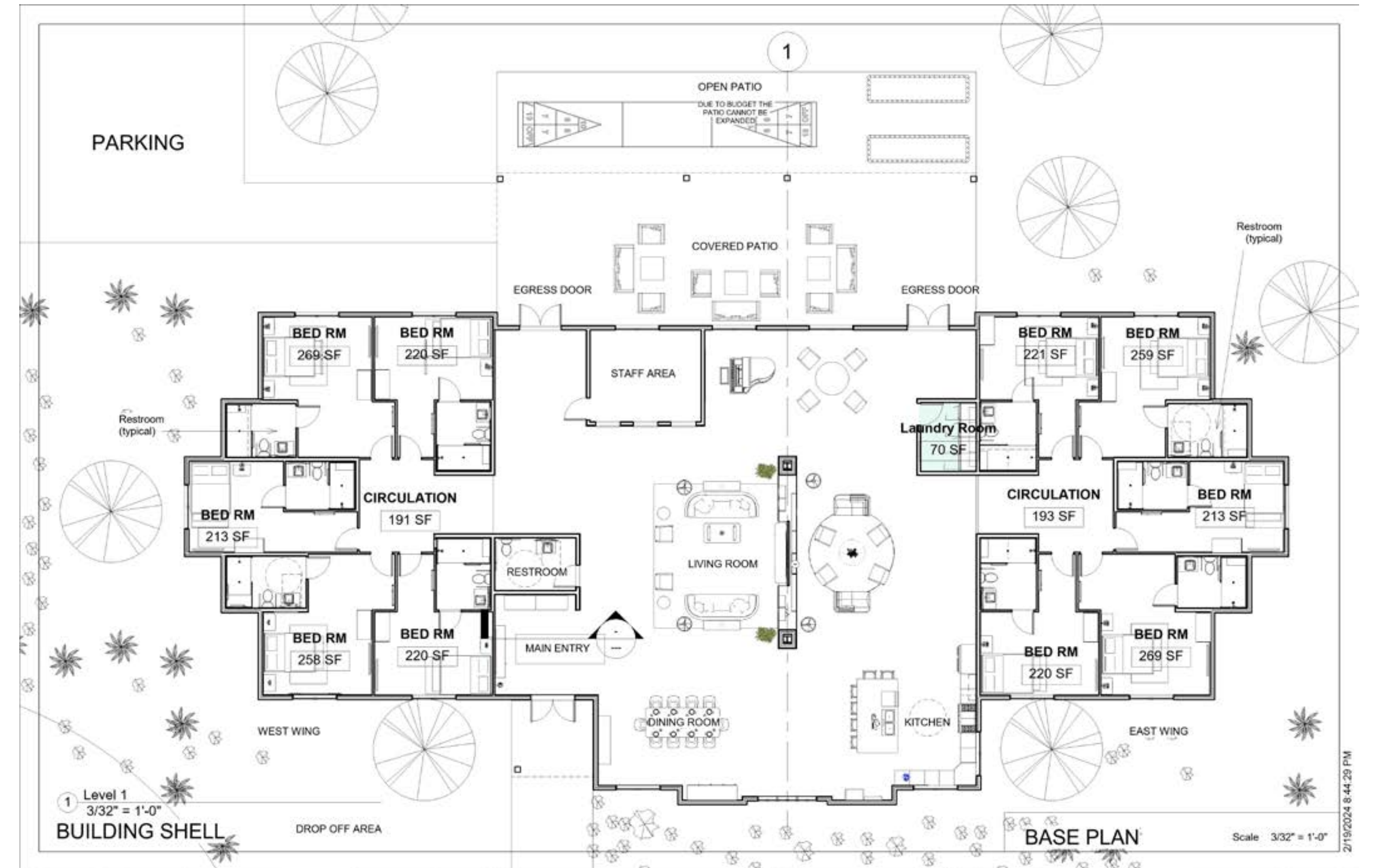
Design Statement:

As humans, we often seek out familiar places and people for comfort and security. Our homes are often where we find this refuge to relax, unwind, and forget our worries. The concept of "home away from home" for a memory care project allows us to embrace the unfamiliar and explore the world beyond our four walls. This is the purpose of Comfort Care. Houston is known for its diverse community and the uniqueness of the neighborhoods that are in it. This concept will be incorporated into this design for the different "neighborhoods" of the facility to create uniqueness.



North Elevation

BASE PLAN



2/19/2024 8:44:29 PM

LIVING ROOM



Alden Field
by Armstrong
Flooring



Goldfinch
by CF Stinson
Upholstery



Seaside
by Architex
Upholstery



Smokey Grey
by Karastan
Flooring



Rendering Description:

The living room is the central area of the residence where socialization will occur. The vaulted ceiling and tall entertainment center reflect the type of design that may be seen in a Houston home. Yellow, blue, and a mix of light and dark stained woods are also used in the space to reflect the richness of Texas culture.

- Open design layout for wayfinding.
- Inset rugs are utilized throughout the residence for the senior's safety.
- Main living circulation within the staff area is to ensure the regulation of activities/safety.
- Custom-built wall encasings for resident's shareable items and a display for books for entertainment.

FF&E:



Wellington Sofa
by Laskasas



Noble Armchair
by Riva1920



Mesh Pendant
by Luceplan



Dean Sideboard
by Laskasas

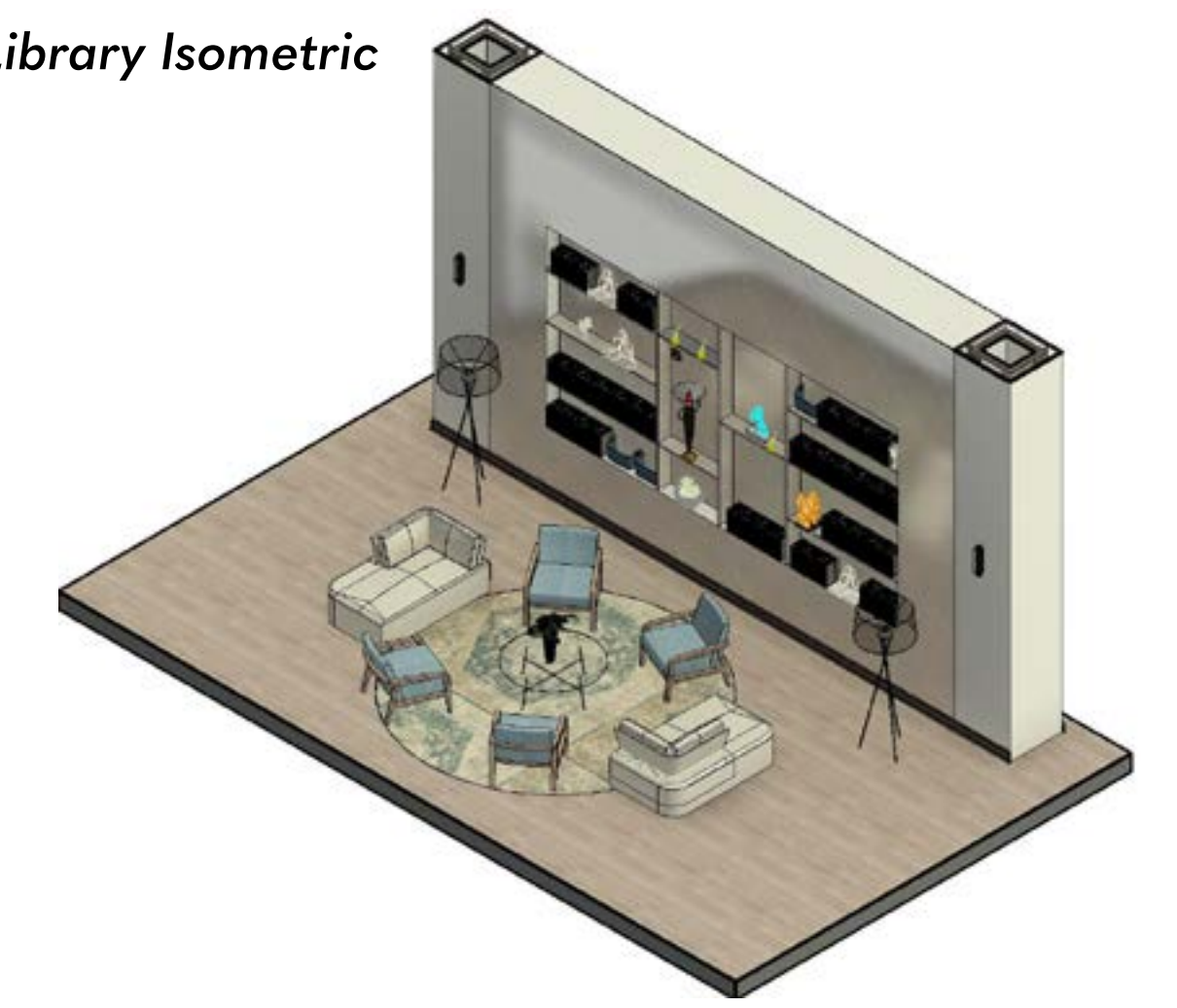
DINING ROOM



Living Room Isometric



Library Isometric



BEDROOM



Gala
by York Contract
Wallpaper



Marsh
by Karastan
Inset Rug



Mineral
by Architex
Upholstery



Selva Sylvan
by Armstrong
Flooring



Rendering Description:

The bedrooms at Comfort Care aim to simulate a home-like environment. Warm tones throughout the project are also utilized in the bedrooms. Customizable aspects are located in each bedroom to allow residents to enjoy their space as if they were in their previous home.

- Memory boxes are located outside of each bedroom so residents can store personal items to be displayed.
- Technology (bed sensors, smart mirrors, etc.) is utilized in bedrooms and bathrooms to facilitate residents' and staff's use.
- Picture frames are added to each room for residents to decorate with loved rooms.
- The contrast between light and dark is utilized in the bathrooms so objects are easier to see.

FF&E:



Kopper- Wooden Bed
by Karpenter



Sausalito- Nightstand
by Pottery Barn

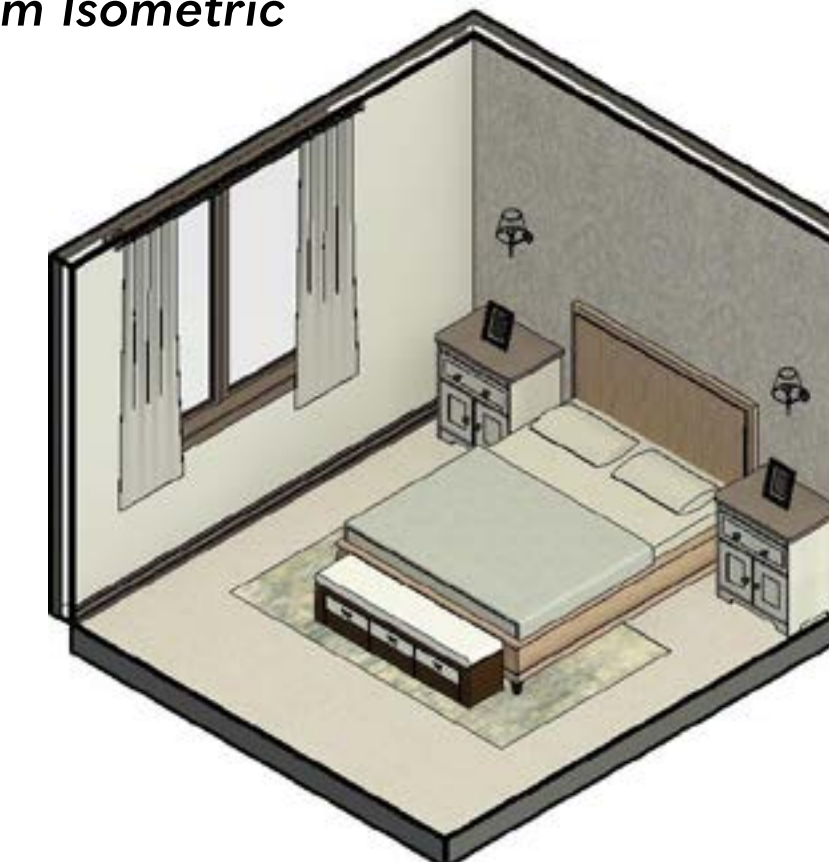


BC2- Wall Lamp
by Santa & Cole



Verdera- Smart Mirror
by Kohler

Bedroom Isometric



BATHROOM



Bathroom Isometric



W Hotel

Project Data:

Project Type: Hospitality

Location: Dubai, United Arab Emirates (UAE)

Completed: Spring 2023

Hotel Brand: W Hotel

Software Used:



Project Information:

This project will involve designing the lobby, administrative offices, restaurant, and guest suite for W Hotels in Dubai, United Arab Emirates (UAE). The luxurious hotel should be designed based on its brand and values while adhering to the location. Other design choices that should be considered are design trends, design theories, historical precedents, contextual needs, sustainability, biophilia, etc.

Design Statement:

W Hotels combines diverse cultures and vibrant energy in its design. The hotel draws inspiration from the location, challenging preconceived notions. A calming turquoise hue creates a relaxing atmosphere upon arrival, while a lively burgundy adds a playful touch, adhering to the brand's aesthetic. The design balances solid and natural textures, emphasizing luxury through flooring, columns, and ceilings. Biophilia is integrated into the project with tropical plants, natural light, and materials for well-being and connection to the surroundings.

LARGE RECEPTION AREA

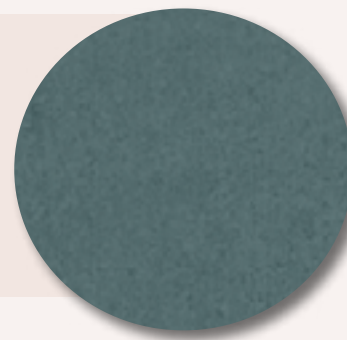
Bianco Antico
by Daltile
Walls, Columns



Alabaster
by Daltile
Ceiling



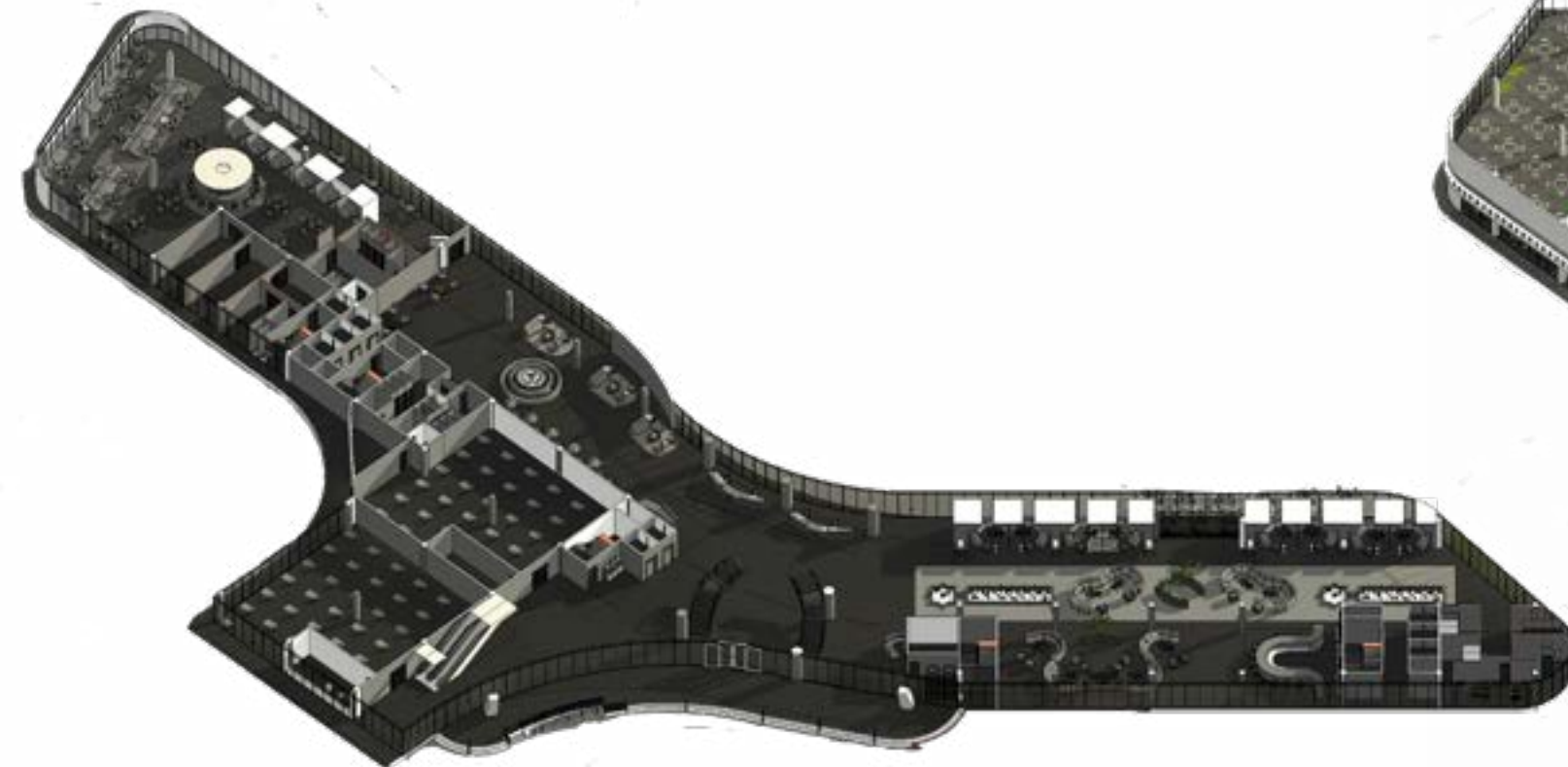
Botanical
by Daltile
Solid Surface



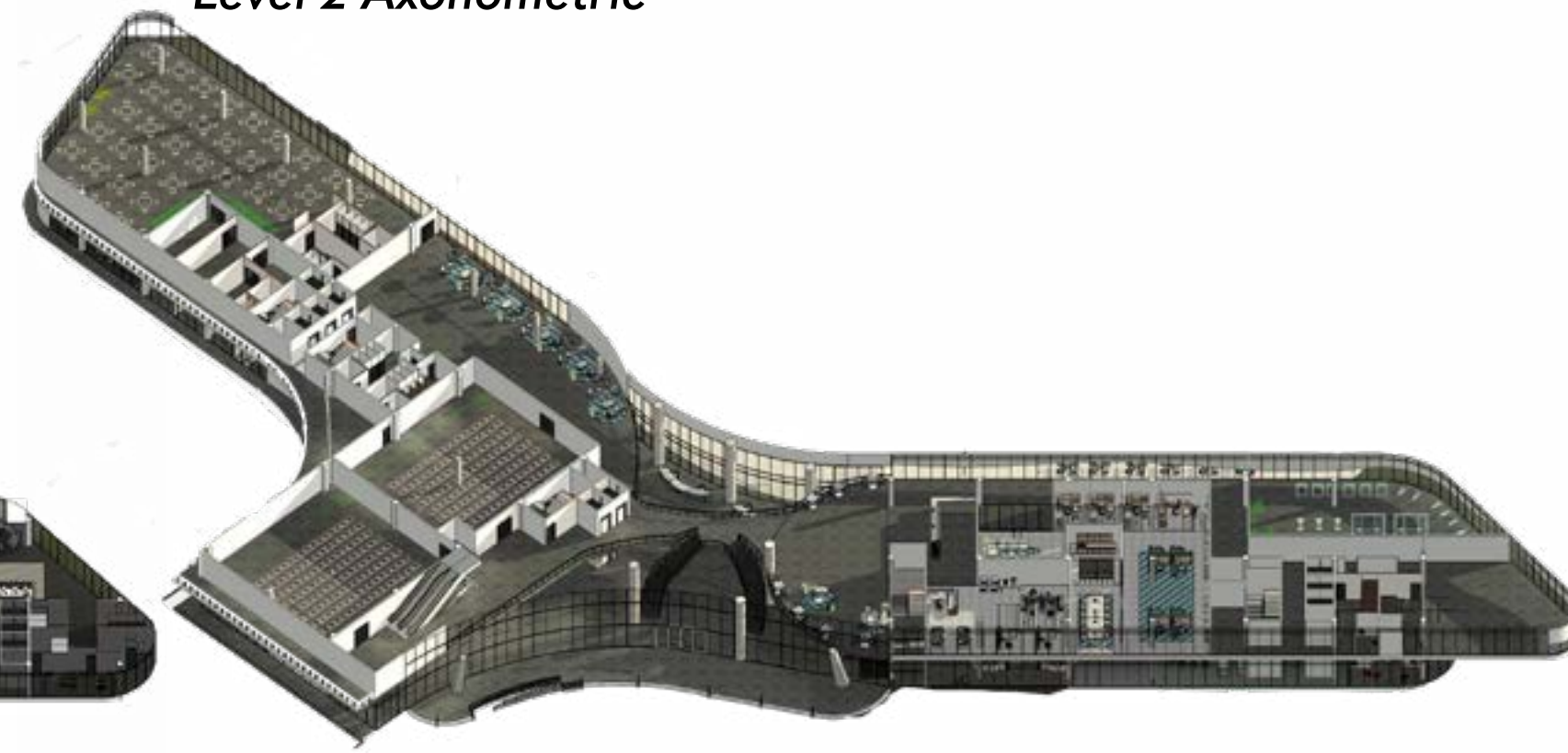
Bianco Lucre
by Daltile
Flooring



Level 1 Axonometric



Level 2 Axonometric



Rendering Description:

The open space produces a "WOW" factor as guests enter the reception area with adequate circulation and enter the hotel to check-in. Access to the pool views is behind the reception desk as guests continue in the space.

Custom Built Reception Desk Elevation:



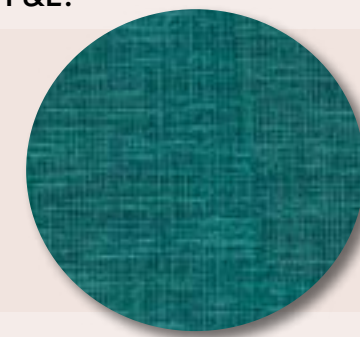
Level 1

0"

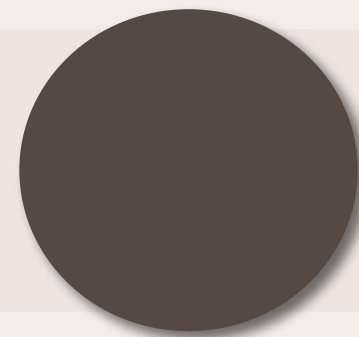


LOBBY AREA

FF&E:



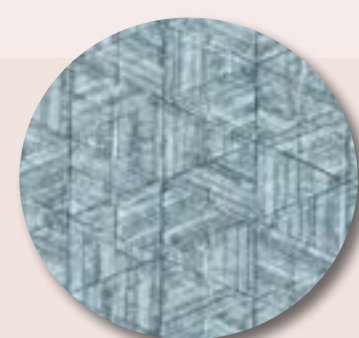
Mermaid- Savant
by Architex
Upholstery



Brown Sugar
by Benjamin Moore
Paint



Hemp
by Designtex
Upholstery



Turquoise
by York Contract
Wallpaper

FF&E:



Circa
by Coalesse



Avery- Armchair
by Mitchell Gold Bob Williams



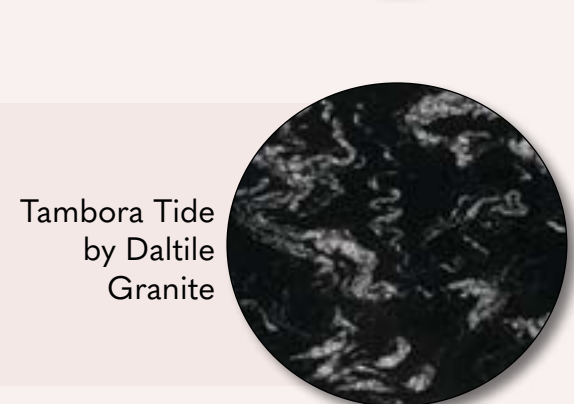
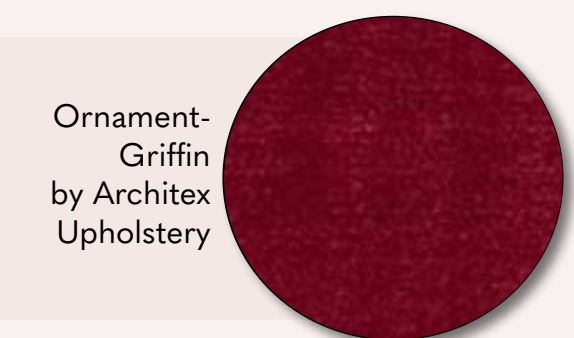
Intimate Lounge Seating



An Islamic arch is used to reflect the location. It hones in on the intimacy of the space, creating a separation of privacy for the guests seated in this area.

Closure: In this space, the Gestalt theory principle is used to form shapes. Natural patterns and textures, tropical plants, and a waterfall are also used.

RESTAURANT



Rendering Description:

The restaurant features unique materials and colors, with vibrant burgundy and dark flooring creating an intimate atmosphere. The central bar enhances the ceiling design and serves as a focal point. Cozy lighting from hanging pendants adds to the intimate ambiance for guests.

FF&E:

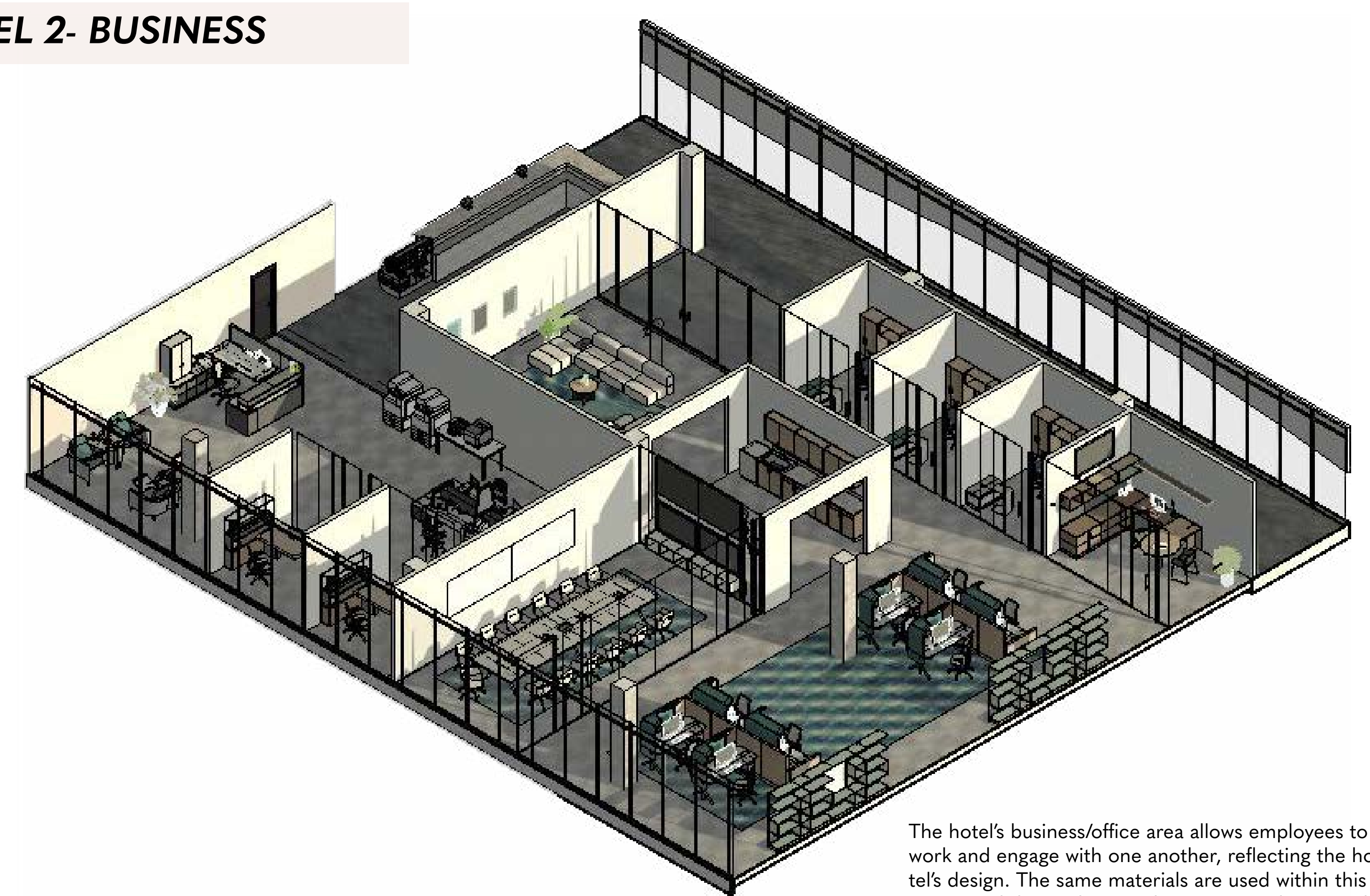


Copa- Bar Stool by Viccarbe

KD91- Multipurpose Table by Falcon

Tulgrain- Armchair by Falcon

LEVEL 2- BUSINESS



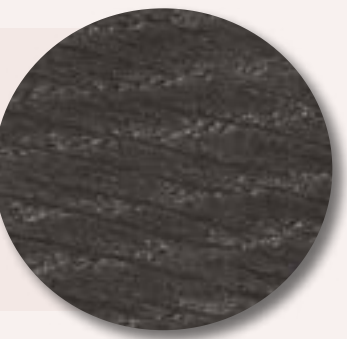
The hotel's business/office area allows employees to work and engage with one another, reflecting the hotel's design. The same materials are used within this space, and the workspaces have an open layout with private desk partitions.

LEVEL 17 GUEST SUITE

Aura
by York Contract
Wallcovering



Cosmos
by Daltile
Granite



Soleil de Mer
by Shaw Contract
Flooring



Sylvan
by Armstrong
Flooring



GUEST LIVING ROOM



Rendering Description:

The suite brings a luxurious, relaxing environment for guests to enjoy during vacation. Turquoise is also used in this space to reflect the relaxation of the space. The light wood flooring contrasts with the dark wood flooring in the headboard to emphasize the use of the wallpaper in the middle of the headboard. The organic ceiling design replicates the openings in the lobby, which emphasizes the use of repetition throughout the project.

- Built-in headboard with luxurious patterns.
- Textures and patterns reflect the natural environment.
- Light and airy materials to encapsulate the relaxing intent of the suite space.



Project Data:

Project Type: Workplace/ Office Design

Location: Boston, Massachusetts

Completed: Fall 2022

Project Information:

iNext, a global robotics company in Rhode Island, is relocating to Boston's Seaport District. They prioritize improving everyday living through their sleek, innovative, and user-friendly products. The brand will partner with Steelcase for furniture, emphasizing collaboration and reflecting its core values and location.

Design Statement:

A nucleus is the central / most important part of a group, object, etc. The Seaport District is considered the nucleus of the sustainable and innovative city of Boston. Similarly, iNext can be described as the new nucleus in users' lives, providing products and a work environment that promotes collaboration and uniqueness. The color scheme replicates the company's collaborative initiative to identify the different workstations but define how they work together. Emphasizing the importance of technology, iNext aims to create a healthy environment for users to flourish

Software Used:



Brand's Logo:



Axonometric Plan:



iNext Core Values:



Humanity Centered



Purpose Driven



Foster Connections



Act with Integrity & Excellence



Be Authentic, Be You



Think Big and Be the Next

RENDERED FLOOR PLAN

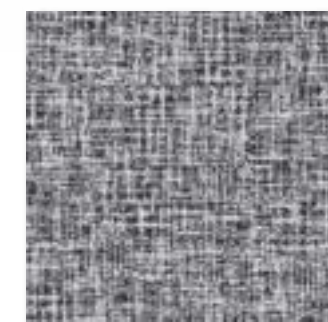


LEGEND

1. RECEPTION
2. HOME OFFICE LAB
3. RETAIL MOCK-UP
4. PHONE ROOM 1
5. STORAGE
6. WORK CAFE
7. WORKSTATION
8. INCLUSIVE DESIGN LAB
9. LARGE MEETING ROOM
10. PRODUCT MANAGEMENT TEAM SPACE
11. PRODUCT MANAGEMENT WORKSTATION
12. PRODUCT INCLUSION DIRECTOR OFFICE
13. DEVELOPMENT DIRECTOR OFFICE
14. PROJECT ROOM 1
15. ENGINEERING DEDICATED TEAM SPACE
16. ENGINEERING WORKSTATION
17. DESIGN & ENGINEERING
18. DESIGN WORKSTATION
19. DESIGN DIRECTOR OFFICE
20. DESIGN DEDICATED TEAM SPACE
21. PROJECT ROOM 2
22. PHONE ROOM 2
23. PHONE ROOM 3
24. WELLNESS ROOM
25. MOTHER'S ROOM
26. VISITOR'S WORKSTATION
27. PHONE ROOM 4
28. RESOURCE CENTER



Converse
by Shaw Contract



Merino
by Shaw Contract



Include
by Shaw Contract



Vibrance
by Shaw Contract



Blue Hawaiian
by Armstrong



Alchemy Flourite
by Armstrong



Alchemy Salmaic
by Armstrong

RECEPTION AREA

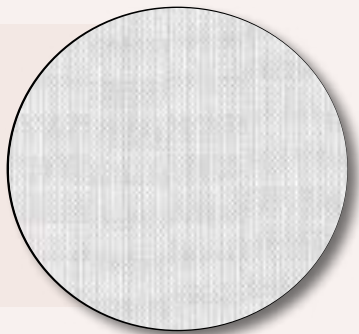
Blue Carrara
by Daltile
Accent Wall



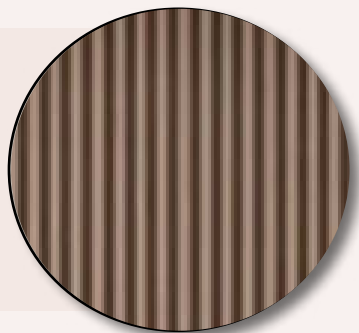
Veer
by 3Form
3D Panel-
Desk



Ionic
by CF Stinson
Upholstery



Walnut Wood
Paneling
by Porpora
Wood



LARGE MEETING AREA



FF&E:



Pebble Sofa
by Bolia



Kent Collection-
by West Elm



Sky- Ceiling Panel
by Arktura



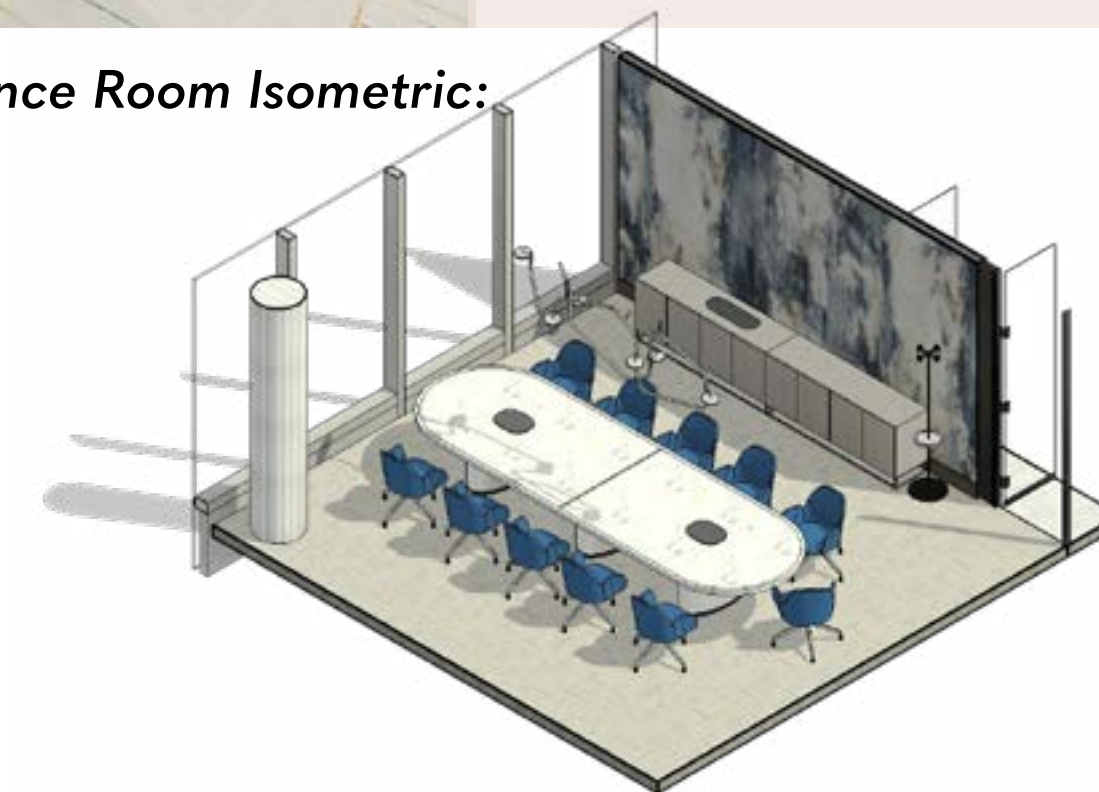
Palindrome- Pendant
by RBW

Rendering Description:

The reception area welcomes visitors into iNext's environment with their primary branding color, Seaport Blue. As they leave the elevator, the large conference room is their first point of reference entering the space. This allows for easy wayfinding when meeting people outside of iNext's work-space. The receptionist's desk is located against the wall with the LOGO for space distinction.

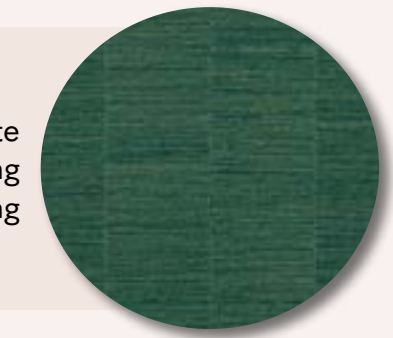
- The elliptical shape is repeated on the furniture and reception desk to represent the concept of nucleus branding.
- The Vibrance flooring is used in the collective spaces of the design to cater to the color scheme of blue, green, and yellow.

Conference Room Isometric:

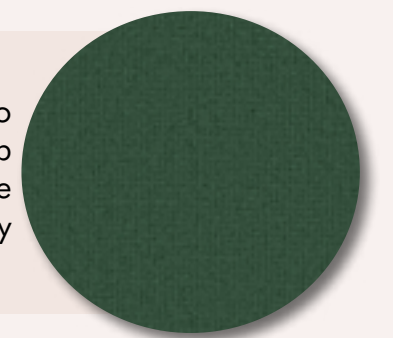


ENGINEERING WORKSTATION

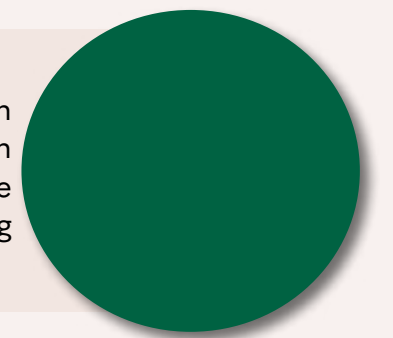
Alchemy Flourite
by Armstrong
Flooring



Serpent- Bo Peep
by Steelcase
Upholstery



Deep Green
by Benjamin Moore
Paint- Ceiling



Alfalfa
by Architex
Upholstery



Rendering Description:

As the in-between space of the Design and Product Management and Development department, the Engineering department is zoned green to allude to the blue and yellow creating green. This also ties back into the logo design and concept that all team parts are essential to make up the whole. Even though it is located in the Engineering department, its proximity to the design area allows both departments to enjoy it.

FF&E:



Campfire Lounge
by Steelcase



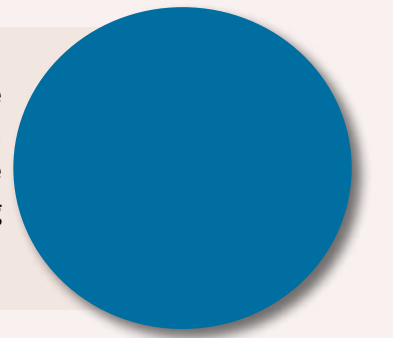
Work Boardwalk
by Steelcase



Turnstone Bivi System
by Steelcase

DESIGN WORKSTATION

Seaport Blue
by Benjamin Moore
Paint- Ceiling



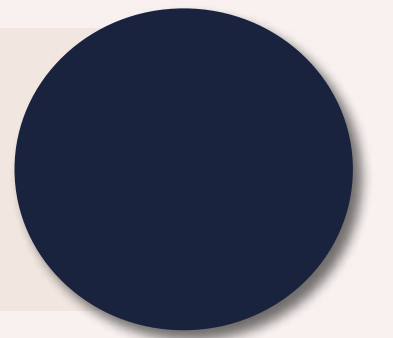
Blue Hawaia
by Shaw Contract
Flooring



Blue-FOMO
by DesignTex
Upholstery



Jazz
by Steelcase
Seating Plastic



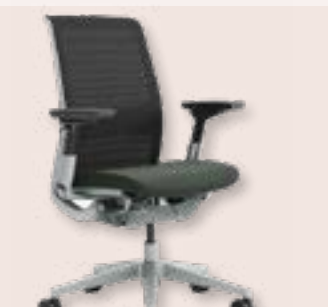
Rendering Description:

As the creators of the company's products, the design workstation is zoned blue to reflect the company as a whole. The wayfinding is indicated with flooring and ceiling changes and the use of it on the furniture. The desks are height adjustable, and the attached panel creates privacy for the users if needed. The Design Director's private office is near the workstations, and the appropriate privacy option is available for their responsibilities.

FF&E:



Flex Personal Spaces
by Steelcase



Think 465 Series
by Steelcase



TS Series Storage
by Steelcase

POWELL HALL

Project Data:

Project Type: Renovation
 Location: Valdosta, Georgia
 Completed: Fall 2022

Project Information:

This project is renovating Valdosta State University's Department of Music, Powell Hall. The focal point is restoring the Recital Hall, the former Reading Room. The design intends to uphold the historic preservation of spaces such as the entry stair, lobby, and reading room. The Recital Hall's new intent is to benefit the music department and other areas of reach to participate in professional, faculty, and senior recitals.

Design Statement:

The Powell Hall renovation project prioritizes the preservation of the original building structure. It now includes flexible teaching spaces, collaboration areas, and advanced technology. Acoustics are managed through angled walls and acoustical panels in practice rooms. Energy-efficient lighting with occupancy and daylight sensors is used for unoccupied areas. Biophilic features like moss walls are integrated, and a color scheme of red, blue, green, and yellow promotes productivity and human behavior. The project adheres to universal design standards.

Software Used:



2nd East Front Elevation



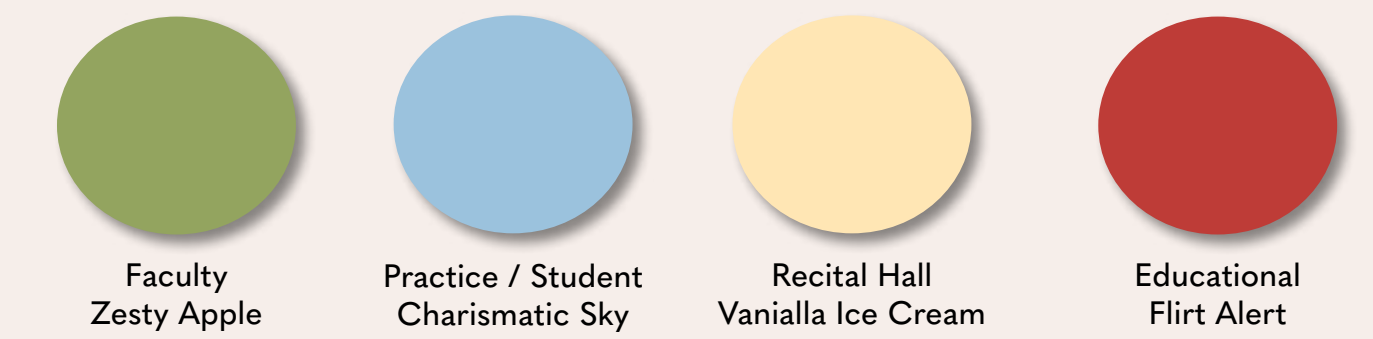
BLOCK PLAN



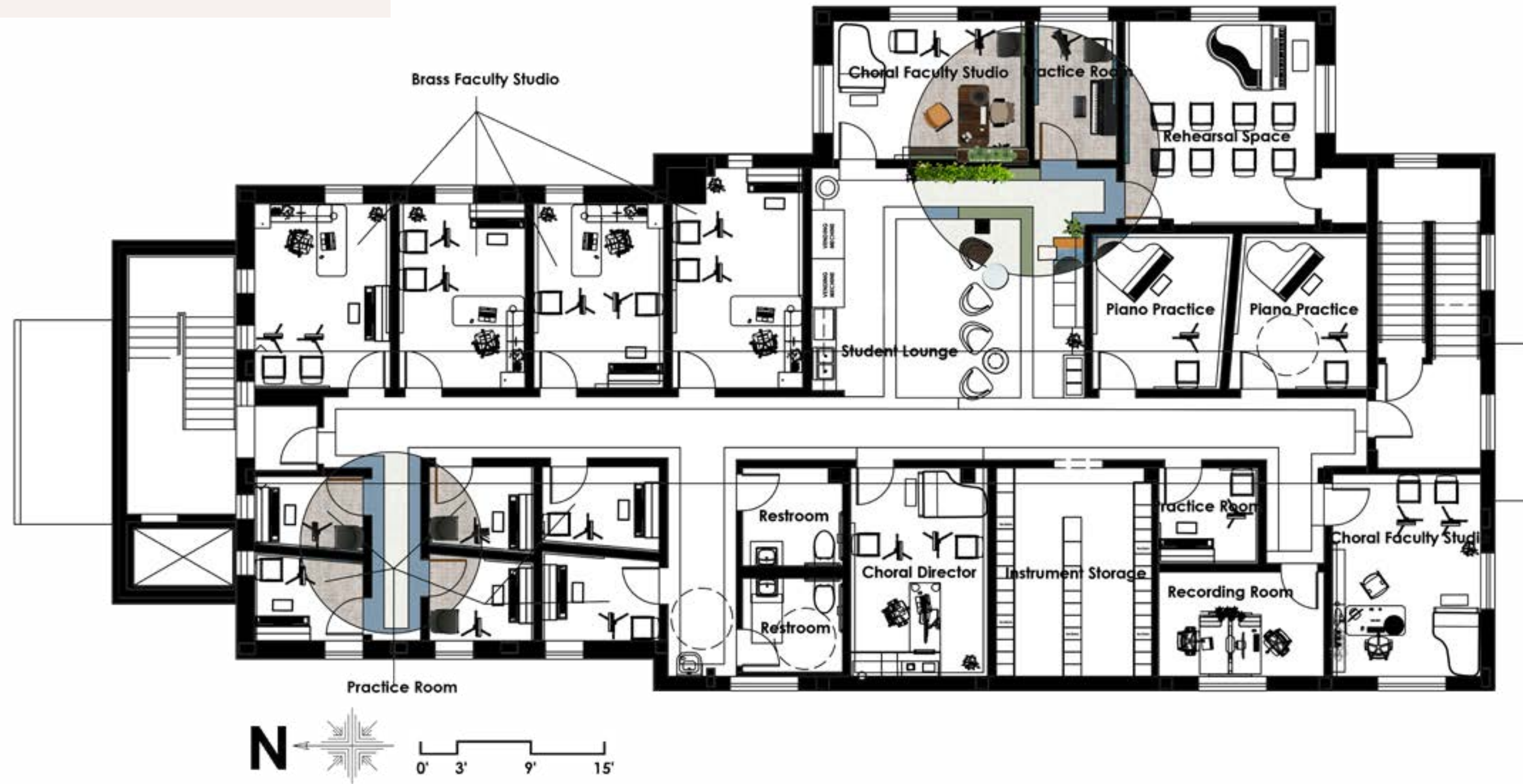
Floor Plan Description:

Zones for students and faculty distinguish the 2nd level so students and faculty can quickly identify what they will occupy. Faculty spaces are green to indicate the growth of students' knowledge in these spaces. Practice Rooms are blue to represent calmness within the space. Yellow spaces are for the recital areas. Red (not represented on the level) is used in classroom spaces for students to represent their Blazer pride.

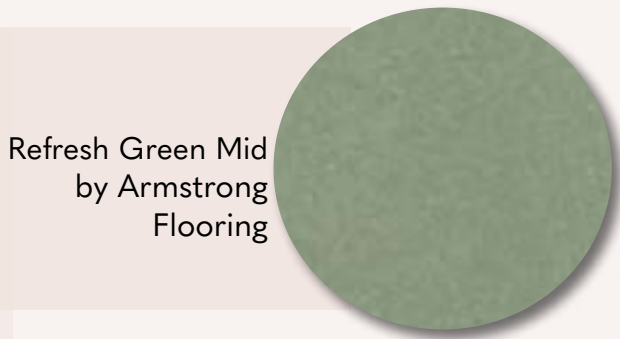
Zone Identification:



FLOOR PLAN



STUDENT LOUNGE



Floor Plan Description:

Rooms are grouped to provide a clear indication of wayfinding. All brass faculty studios are located on this level for convenience for students and faculty members, with practice rooms adjacent. The student lounge is in the center of the circulation so students can come together and relax.

FF&E:



Elective Elements by Steelcase Musician Chair by Wegner Amia Ergonomic Chair by Steelcase

Rendering Description:

The student lounge is a space for relaxation and interaction. It includes a kitchenette for food storage and preparation and features an octagonal ceiling panel that reflects the historic building's architecture. The color scheme promotes unity and a relaxed atmosphere.

FF&E:



Await Lounge by Steelcase Joel Lounge Chair by Coalesse Soundscapes by Armstrong

JD'S CONTEMPORARY EATERY

Project Data:

Project Type: Hospitality- Restaurant

Location: Orlando, Florida

Completed: Fall 2021

Software Used:



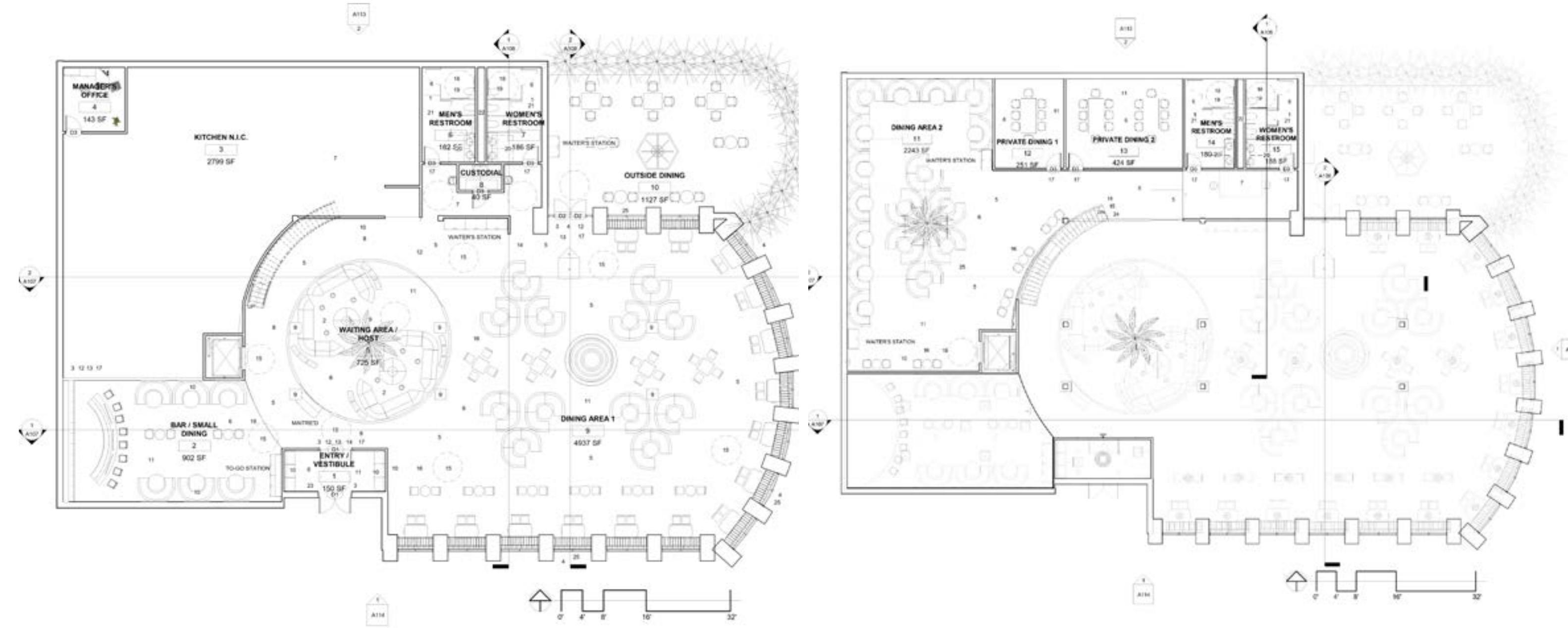
Project Information:

This project aims to design a restaurant that combines innovation with COVID-19 safety measures. Modern materials, touch-free technology, and outdoor dining options will be incorporated. The layout and material choices will also reflect the considerations while combining an elegant, luxurious atmosphere. To-go stations will also be implemented to cater to user preferences.

Design Statement:

The restaurant design project features a cozy, naturalistic environment with warm earth tones and a focus on biophilia. In response to COVID-19, the design accommodates the new lifestyle, including a To-Go station for takeout and delivery. The booths have high back panels that create separation and privacy between customers.

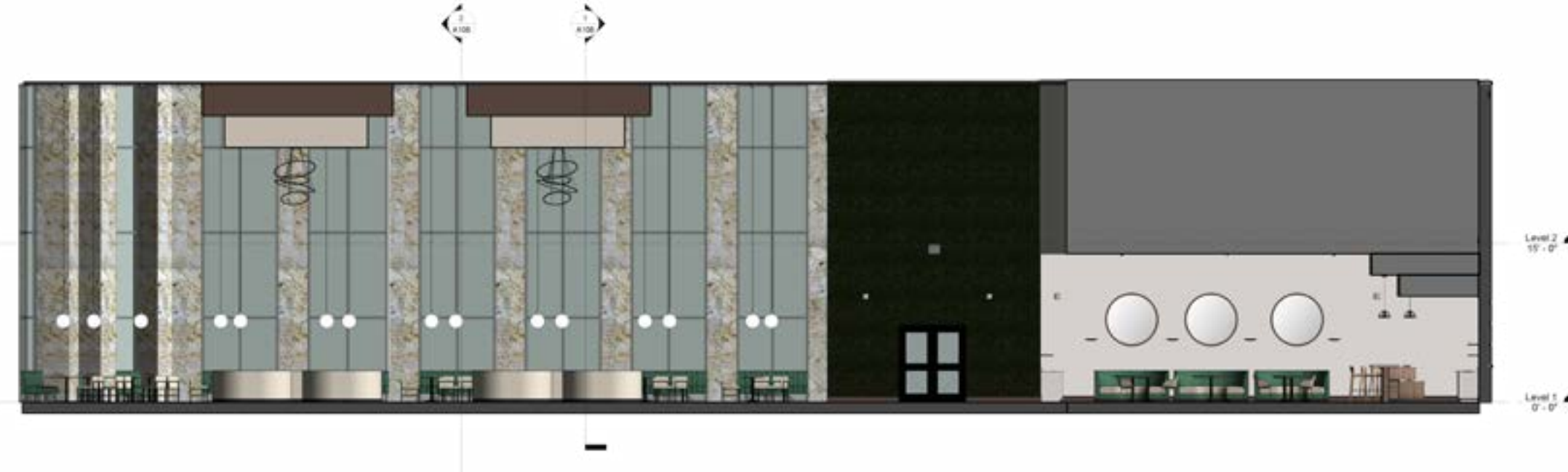
FLOOR PLANS



Restaurnat Logo:



North Elevation:



Floor Plan Description:

The restaurant's furniture reflects the architecture in its curvilinear form, which is repeated throughout both levels. The furniture is placed in reference to COVID-19 considerations. Naturalistic elements such as a water fountain, plants, and access to the skylight on the second level appeal to the restaurant's sophistication.

FF&E:



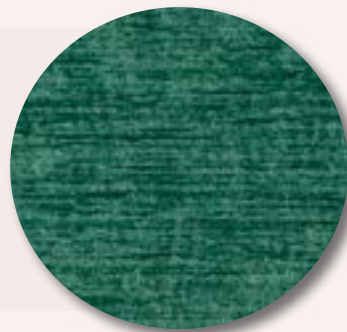
Philly
by Falcon Products

3/4 Circle
by West Coast Industries

U-Shape
by West Coast Industries

MAIN SEATING AREA

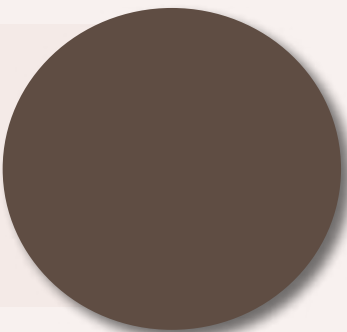
Lapis- Theater District by Architex Upholstery



Colonial Gold by Daltile Columns



French Press by Benjamin Moore Paint



Affinity- Pebble by Architex Upholstery



MEZZANINE



Rendering Description:

The mezzanine provides excellent dining area views and includes natural elements like moss walls, greenery displays, and a tree in the waiting area. Half walls maintain privacy, and natural light is abundant thanks to large curtain walls. A water fountain adds a soothing touch, and the seating arrangement promotes intimacy. Lighting can be adjusted to create various moods.

- Overall view of restaurant looking
- Open layout with privacy indicated through the furniture.

East Elevation:



FF&E:



Campfire Lounge by Steelcase



FourMe Chair by West Coast Industries



Basic Round Table by West Coast Industries



Lohja- Chandelier by Cameron Design House



THANK YOU!

For additional project information please refer to the following:

E: jessicadstephens2000@gmail.com

W: www.jessicastephensdesigns.com

LI: <http://www.linkedin.com/in/jessica-stephens-0234js>